

D
I O R G A

ALEXANDRA

ALEXANDRA IORGA

D'IORGA
PORTOFOLIO

INTERIOR & YACHT DESIGN

CONTENTS

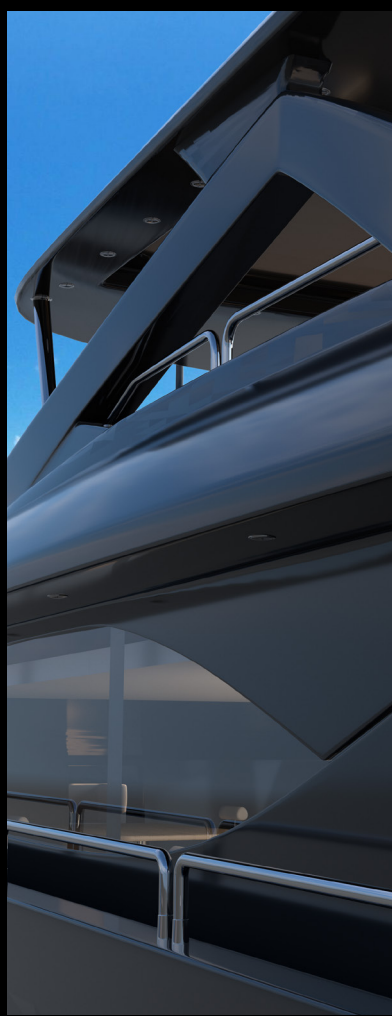
CHAPTER 1	INTRODUCTION
CHAPTER 2	OSSETRA
CHAPTER 3	THALISA
CHAPTER 4	ELENDE
CHAPTER 5	STELLARIA
CHAPTER 6	NEST
CHAPTER 7	LAGUA
CHAPTER 8	REFLECTA
CHAPTER 9	ETHEREA

I. INTRODUCTION

ALEXANDRA IORGA

I AM AN **INTERIOR DESIGNER**, COMING FROM **ROMANIA**, SPECIALIZING IN **YACHT DESIGN**, DEDICATED TO CREATING SPACES THAT ARE BOTH FUNCTIONAL AND EMOTIONALLY ENGAGING. MY WORK TRANSFORMS INTERIORS INTO **UNIQUE EXPERIENCES** ON LAND AND AT SEA BY BLENDING CREATIVITY, TECHNICAL EXPERTISE, AND A DEEP UNDERSTANDING OF MY CLIENTS' VISIONS. I HOLD A **BA IN INTERIOR DESIGN** FROM **NABA IN MILAN** AND I AM CURRENTLY PURSUING AN **MA IN YACHT DESIGN** AT **IED IN TURIN**. WITH A DIVERSE BACKGROUND ACROSS MULTIPLE DESIGN FIELDS, I OFFER A COLLABORATIVE PROCESS THAT ENSURES THE **HIGHEST QUALITY OUTCOMES** FOR CLIENTS WITH THE MOST REFINED EXPECTATIONS





YACHTS



II. M / Y OSSETRA

80 M

OSSETRA IS AN **80-METER M/Y** DESIGNED WITH A STRONG ARCHITECTURAL LANGUAGE. **SHARP EXTERIOR LINES** MEET **SOFT CONTEMPORARY INTERIORS** THAT BALANCE INNOVATION WITH COMFORT. A HARMONY OF CONTRASTS DEFINES THE YACHT'S **BOLD IDENTITY**.





LAYERED DECKS

EXTERIOR



OSSETRA REDEFINES ELEGANCE AT SEA WITH A **BOLD** ARCHITECTURAL **SILHOUETTE** AND **REFINED INTERIORS**. ITS LAYERED DECKS AND SCULPTURAL GEOMETRY CREATE A DYNAMIC INTERPLAY BETWEEN **POWER AND CALM**. INSIDE, **MINIMALISM** MEETS **LUXURY**.

BEDROOM



MASTER CABIN



THE **MASTER SUITE** EXUDES CONTEMPORARY **CALM** THROUGH **MINIMALISM**. **CURVED WALLS** AND SUBTLE LIGHTING ENHANCE **SOFTNESS** AND **INTIMACY**. CONTRASTING **BLACK AND WHITE** CREATE AN **ELEGANT BALANCE**.

MASTER BATHROOM



III. M /Y THALISA

65 M

THALISSA IS A **65 METER YACHT** THAT MERGES **FLUID DESIGN** WITH **REFINED LUXURY**. **ORGANIC CEILING SCULPTURES** AND RICH MATERIALS CREATE IMMERSIVE INTERIORS. THE DESIGN EMPHASIZES **CONTINUITY, FLOW,** AND **CONNECTION** TO THE SEA.





LOUNGE AREA

DINNING ROOM



THE DINING SPACE CENTERS AROUND A STRIKING **MARBLE TABLE**. **DARKWOOD** AND GEOMETRIC **WALL PANELS** CONTRAST WITH SOFT NEUTRAL TONES. A REFINED SETTING DESIGNED FOR **INTIMATE** YET LUXURIOUS **DINING**.

IV. ELENDE

50 M

ELENDE IS A **50 METER MOTOR YACHT** BLENDING **WARMTH** AND **SO-PHISTICATION**. DESIGNED AS A SOCIAL HUB, IT OFFERS IMMERSIVE VIEWS AND **LAYERED LIGHTING** FOR ATMOSPHERE. ITS INTERIORS REFLECT A SUBTLE **MODERN LUXURY**, INFUSED WITH **CHARACTER**.



LIVING ROOM





BATHROOM

HALLWAY



A **DARK WOOD CORRIDOR** LEADS INTO REFINED SPACES. SOFT LIGHTING HIGHLIGHTS CONTRASTS OF **MARBLE** AND **veneer**. A SENSE OF **DEPTH** AND **INTIMACY** GUIDES THE TRANSITION.

PRODUCT



V. STELLARIA

FAMILY OF LAMPS

EACH LAMP IN THE COLLECTION IS MADE TO SHOW OFF THE **SPECIAL PATTERNS** AND **COLORS** OF VARIOUS **AGATE CRYSTALS**.
EACH LAMP IS ASSIGNED TO A **ZODIAC SIGN** DUE TO IT **FORM**.





LEO



ITS SHAPE IS ALLIGNED TO THE HOROSCOPE SIGN **LEO**. ITS STRUCTURE IS AN **L SHAPED METAL** PIECE WITH A **GOLDEN FINISH**. THE THREE STONE PIECES IS WHAT MAKES THIS LAMP BEAUTIFUL AND A PIECE OF ART WHEN ITS OFF. THE **E27 BULB** PROVIDES A **WARM** AND **AMBIENT** ILLUMINATION.

LIBRA



FLOOR LAMP **LIBRA** IS REPRESENTING ITS **ZODIAC SIGN**
THE FLOOR LAMP'S STRUCTURE CONSISTS OF A **THIN** BUT RESIS-
TENT **3 METAL LEGS**, SUPPORTING A **1.5M LONG** PIECE OF **STONE**





SAGITTARIUS



THE CEILING LAMP REPRESENTS THE **ZODIAC SIGN SAGITTARIUS**. ITS A **MET-AL STRUCTURE** CONSISTING OF **4 ARMS HOLDING 3 STONE PIECES EACH** AND THE **BULBE**, HAVING A TOTAL OF **15 STONE PIECES AND 5 BULBS**.



INTERIORS

VI. LAGUA

LAKE PENTHOUSE

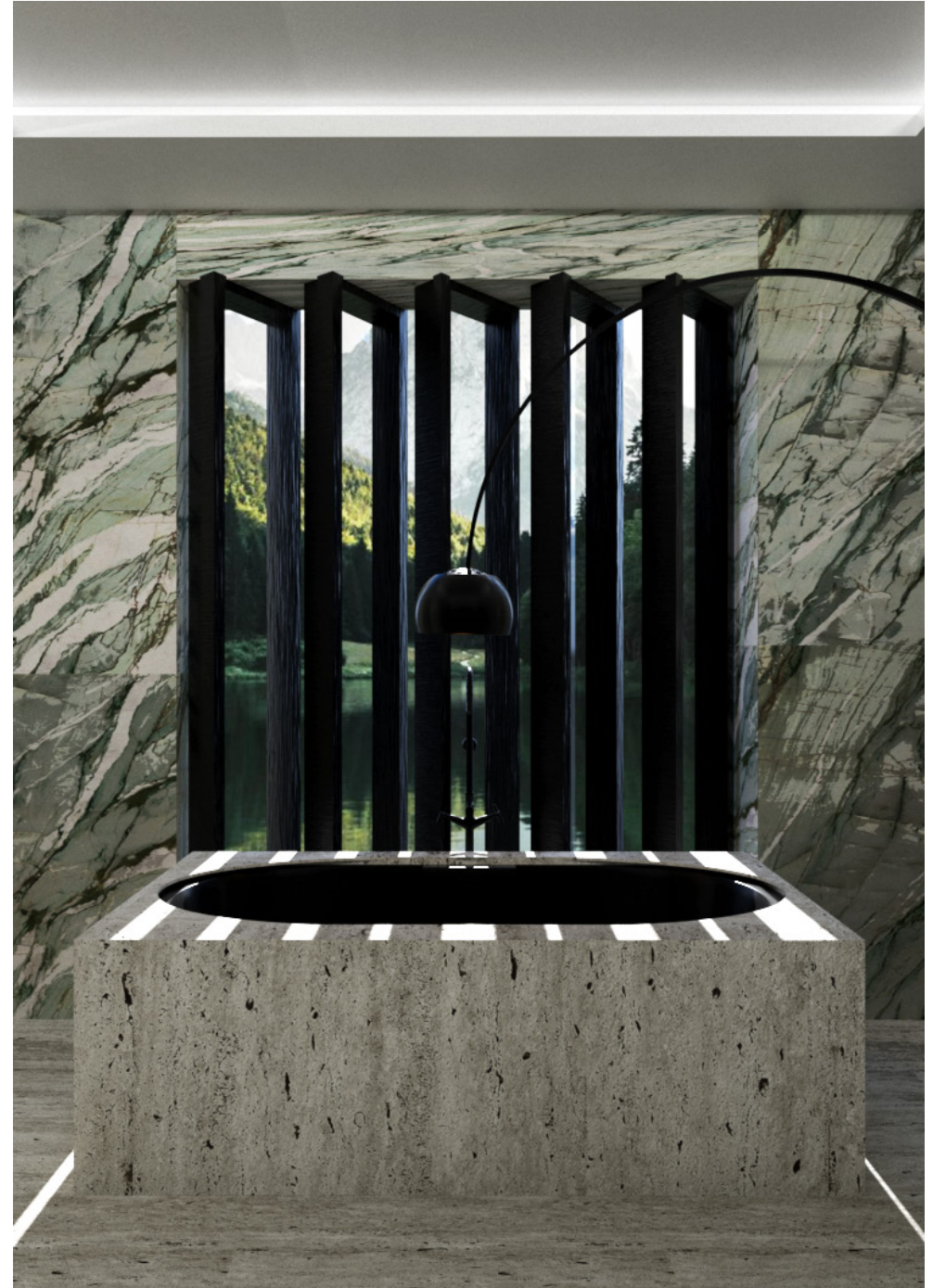
LAGUA IS A **LAKE SIDE RESIDENCE** WHERE DESIGN IS SCULPTED BY **GREEN MARBLE**. THE ARCHITECTURE EMPHASIZES **RAW MATERIALITY** AND A STRONG CONNECTION TO **NATURE**. IT CREATES A RETREAT OF **BOLD STONWORK, LIGHT, AND WATER**.





BATHROOM

BATHTUB



THE BATHROOM HIGHLIGHTS MARBLE AS AN **IMMERSIVE SURFACE**. A **SCULPTURAL BATHTUB** ANCHORS THE SPACE DRAMATICALLY. NATURAL LIGHT ENHANCES THE **STONE'S VEINING AND DEPTH**.

LIVING ROOM



VII. NEST

ARTIST ESCAPE HOUSE

NEST IS A **RETREAT IN THE MOUNTAINS** DESIGNED FOR **ARTISTS**. WITH NATURAL TEXTURES, FIREPLACES, AND FRAMED FOREST VIEWS, IT **BLENDS CREATIVITY** WITH **CALM**. THE HOUSE INVITES BOTH **INSPIRATION** AND **REST** IN A SECLUDED ENVIRONMENT.





KITCHEN

HALLWAY



THE KITCHEN EMBRACES **GEOMETRIC FLOORS** AND **DARK ACCENTS**. **LARGE WINDOWS** OPEN TO FOREST REFLECTIONS AND **NATURAL LIGHT**. DESIGNED FOR RETREAT LIVING WITH CREATIVE WARMTH.

LIVING ROOM



VIII. REFLECTA

WELNESS CENTRE

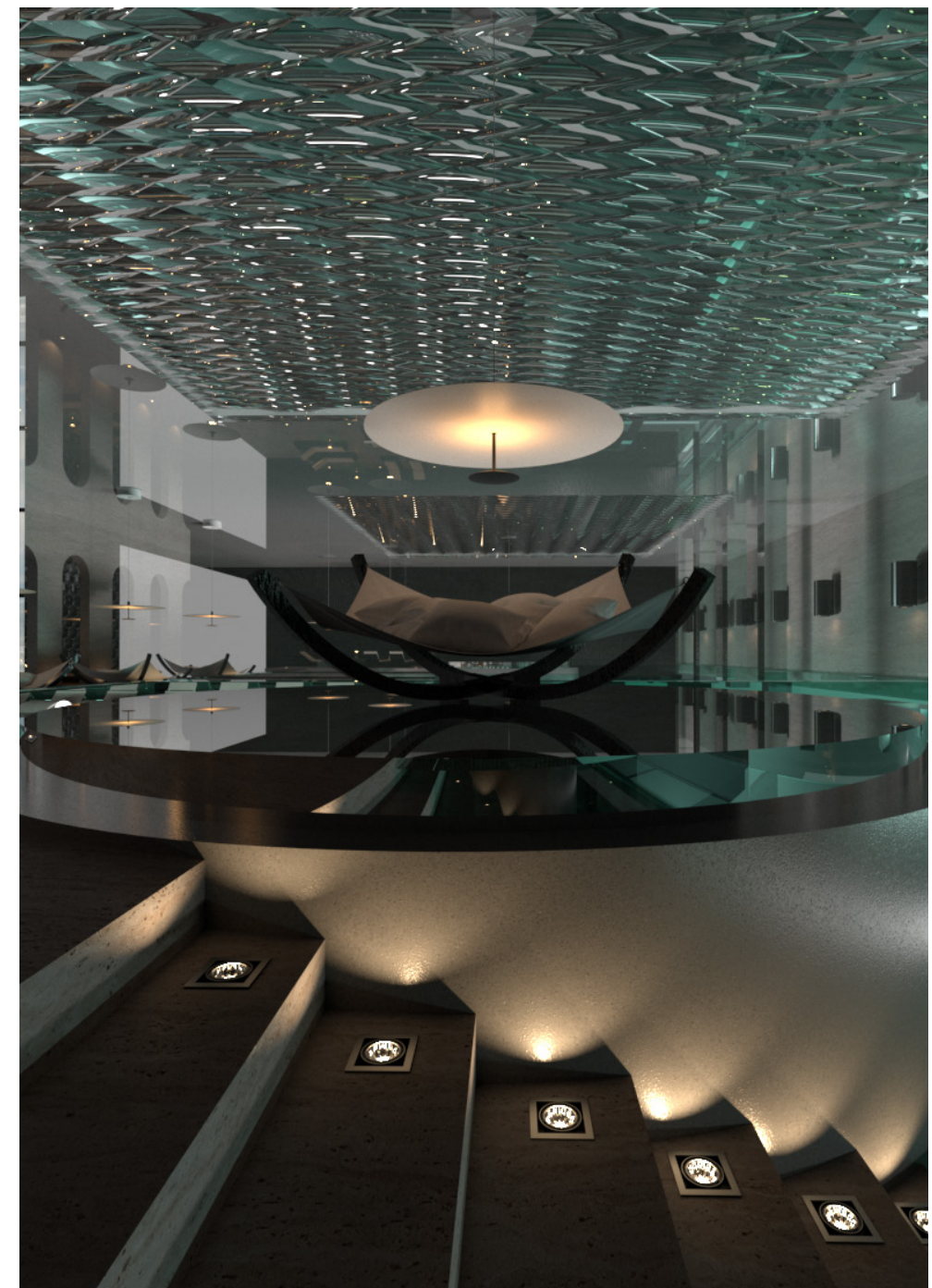
REFLECTA SPA IS A **WELLNESS CENTRE** DEFINED BY **REFLECTIONS, TEXTURES,** AND **SYMMETRY.** WITH A STRONG **INTERPLAY OF WATER, LIGHT, AND SCULPTURAL SURFACES,** IT CREATES AN IMMERSIVE **SANCTUARY.** A BALANCE OF **FUTURISTIC DESIGN** AND **TRANQUILITY** SHAPES ITS UNIQUE IDENTITY.





RELAX AREA

POOL AREA



A TEXTURED MIRRORED WALL CREATES ENDLESS REFLECTIONS. RELAXATION BEDS ALIGN UNDER SCULPTURAL PENDANT LIGHTING. THE DESIGN BLENDS GEOMETRY WITH SERENITY

LOBBY AREA



IX. ETHEREA

TRAUMA HEALING SANCTUARY

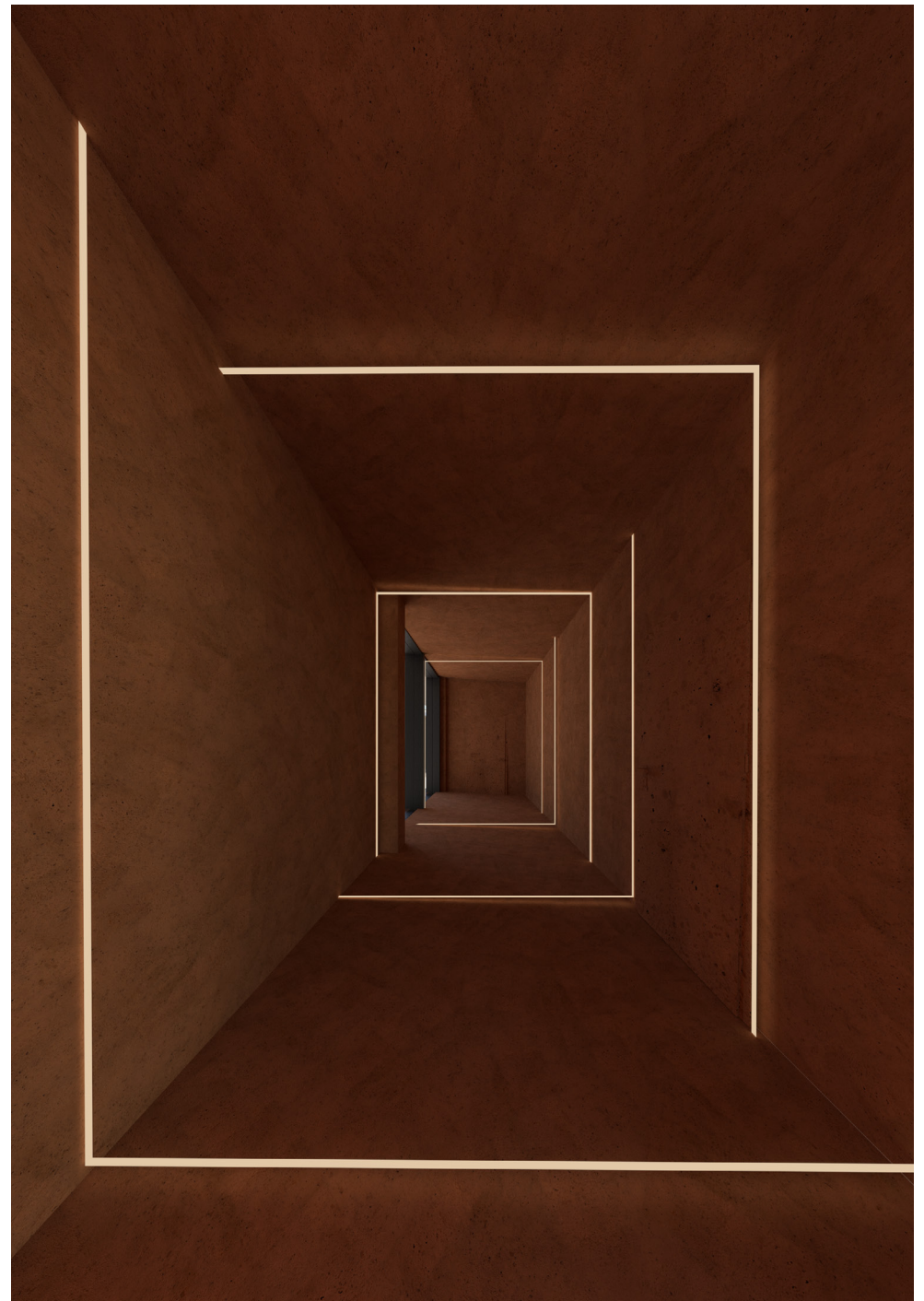
A SANCTUARY DESIGNED TO GENTLY TRANSFORM **PAIN INTO PEACE**, WHERE GUESTS JOURNEY THROUGH **IMMERSIVE ZONES** OF THERAPEUTIC RENEWAL. EACH SPACE OFFERS UNIQUE HEALING MODALITIES—**SOUND, MOVEMENT, REFLECTION, AND NATURE**. TRAUMA IS **ACKNOWLEDGED, RELEASED, AND REWOVEN** INTO **STRENGTH AND SELF-TRUST**.





OFFICE

HALLWAY



THIS **OFFICE** IS DESIGNED AS A **CALM** AND **FOCUSED** ENVIRONMENT WHERE COLLABORATION AND CONCENTRATION COEXIST. HERE, WORK FEELS **DELIBERATE**, A BALANCE BETWEEN PRODUCTIVITY, CLARITY, AND CALM.

BUFFET



THIS BUFFET ROOM IS DESIGNED AS A COMMUNAL SPACE WHERE PEOPLE COOK AND SHARE FOOD TOGETHER, TURNING NOURISHMENT INTO CONNECTION. THE MUTINA BRICKS BY PATRICIA URQUIOLA SHAPE THE WALLS

KITCHEN





YOGA

ATELIER



THIS ATELIER IS DESIGNED AS A SPACE FOR EX-
PRESSION AND RENEWAL, WHERE CREATIVITY BE-
COMES A TOOL FOR HEALING AND RECONNECTION.

GYM



THIS **THERAPY ROOM** IS DESIGNED AS A SPACE OF TRUST AND CONVERSATION. THE FURNITURE ARRANGEMENT BALANCES PROXIMITY AND DISTANCE, OFFERING COMFORT WHILE RESPECTING BOUNDARIES.

CIRCLE



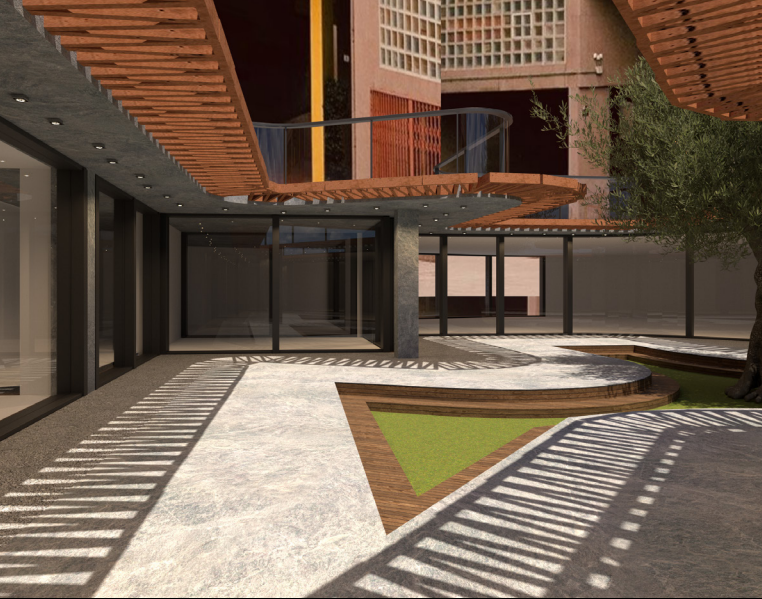


THERAPY

COURTYARD



THIS **COURTYARD** IS DESIGNED AS AN OPEN HEART, A SHARED EXTERIOR ROOM THAT CONNECTS ALL SPACES TOGETHER. IT OFFERS LIGHT, AIR, AND CALM CONTINUITY BETWEEN INSIDE AND OUT.



D' IORGA

ALEXANDRA

EMAIL

alexandraiorgayachts@gmail.com

PHONE

+39 342 8343 200

LINKED IN

<https://www.linkedin.com/in/alexandra-iorga-3b14a225b>

INSTAGRAM

@diorgadesign